



Vol 5 / March 2017



繁 | Share | Subscribe | Unsubscribe

Trane Next-generation Air Handlers



CLCF Climate Changer™

- Lower installed costs
- High energy efficiency
- Reliable indoor air quality
- Superior system performance

Trane Introduces Next-generation Air Handlers CLCF™ to Portfolio

Trane is responsible for introducing two new air-handling units to the market: the CLCF Climate Changer™ for comfort applications, and the CLCF Climate Changer™ for hospital, laboratory and pharmaceutical applications.

→ [Read more](#)

BEYOND TOMORROW

The future never looked so intelligent.

Join us at booth C3106 during the AHR Expo at the Las Vegas Convention Center January 30 – February 1, 2017.



Trane Proves Leadership Position 'Beyond Tomorrow' at AHR Expo

With all the changes happening in the world right now – both within and beyond the industry- it's no wonder that Trane chose "Beyond Tomorrow" as its booth theme for the recent International Air-conditioning, Heating and Refrigerating Exposition (AHR Expo) held recently in Las Vegas, Nevada.

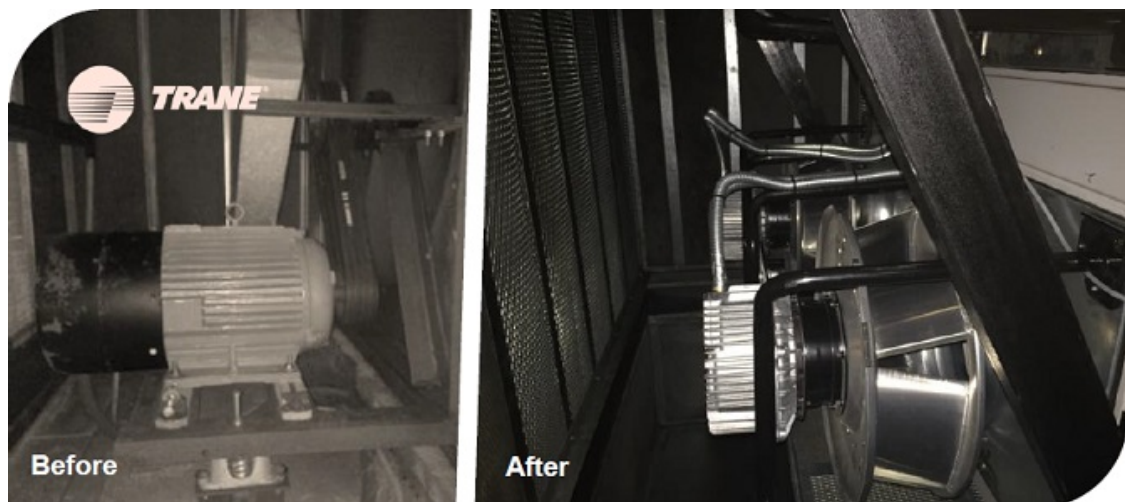
[→ Read more](#)



Trane Recognized as America's Most Trusted HVAC Brands for Third Consecutive Year

Trane has been identified as the Lifestory Research 2017 America's Most Trusted® HVAC System Brand for the third year in a row. The study is based on the opinions of 9,082 consumers and their level of trust in specific HVAC System brands.

[→ Read more](#)



Trane EC Plug Fan Air Handlers Retrofit Option Helps Building Owner Save 40% of Energy

Building Owners and Facility Managers trying to keep operational costs under control are wise to pay special attention to their airside system. The airside systems (AHU + Fan) for a commercial building in Hong Kong can consume 28 percent or more of an industrial facility's yearly electricity use.[1] They also become less energy efficient, less reliable and more costly to operate as they age.

[→ Read more](#)

Company News

18.01.2017 | TYS Annual Dinner 2017

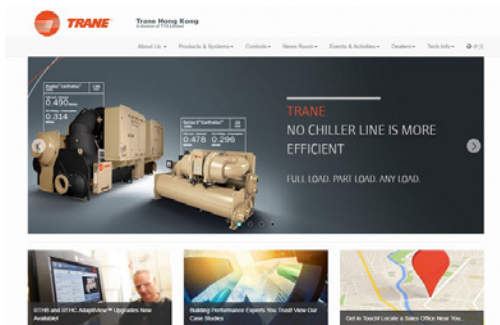
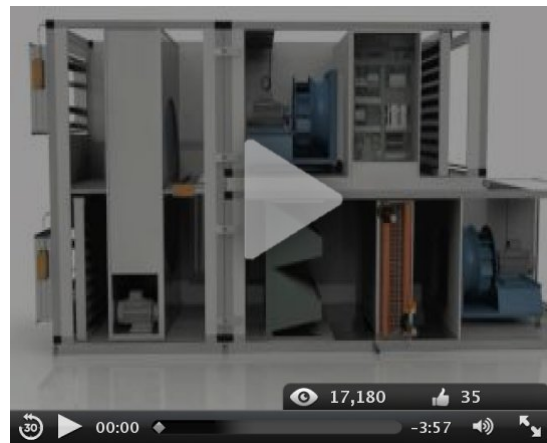
17.02.2017 | HKFEMC Spring Dinner 2017

03.03.2017 | JEC Spring Dinner 2017

Trane CLCF Next Generation Air Handling System

Check out our new video here:

[▶ View All News](#)



New Look for Trane Hong Kong Website

We are pleased to announce the release of our new THK website, designed with a fresh new look and user-friendly layout featuring updates on the latest product information. Please do take a look!

[→ Read more](#)

Trane Dealer Trip 2017 - Bangkok Thailand

In early March, more than 30 Trane dealers, divided into sightseeing and golfing groups, enjoyed a four-day vacation in Bangkok, Thailand.

[→ Read more](#)

Project Highlights



Photo source: cityofdreamsmacau.com

Morpheus at City of Dreams, Macau

Trane Solution: Rising energy costs and new regulations have led to a holistic way of looking at energy consumption in buildings. When selecting units and components, more and more consideration is being given to energy efficiency, and life-cycle cost (LCC) has now become a main aspect in any decision-making process. The Next-generation Trane

variable-speed "Smart DC" fan coil unit has been employed for the Morpheus hotel at the City of Dreams project in Macau. It is expected to provide energy savings of more than 30 percent over conventional AC motor FCU. Besides saving energy, the Smart DC FCU helps to extend motor life, optimize AC motor speed control, maximize occupant comfort and reduce costs.

[→ Read more](#)

THK | TSHK | HKAPC



Vol 5 / March 2017



繁 | Share | Subscribe | Unsubscribe

Trane Introduces Next-generation Air Handlers CLCF™ to Portfolio



"CLCF™ air handlers provide lower installed costs, energy efficiency, reliable indoor air quality and overall superior system performance."

Trane is responsible for introducing two new air-handling units to the market: the CLCF Climate Changer™ for comfort applications, and the CLCF Climate Changer™ for hospital, laboratory and pharmaceutical applications. Designed by Trane to address the performance needs of an entire building, the units are manufactured in Italy and are set to become an industry leader in providing **lower installed costs, energy efficiency, reliable indoor air quality** and **overall superior system performance**.

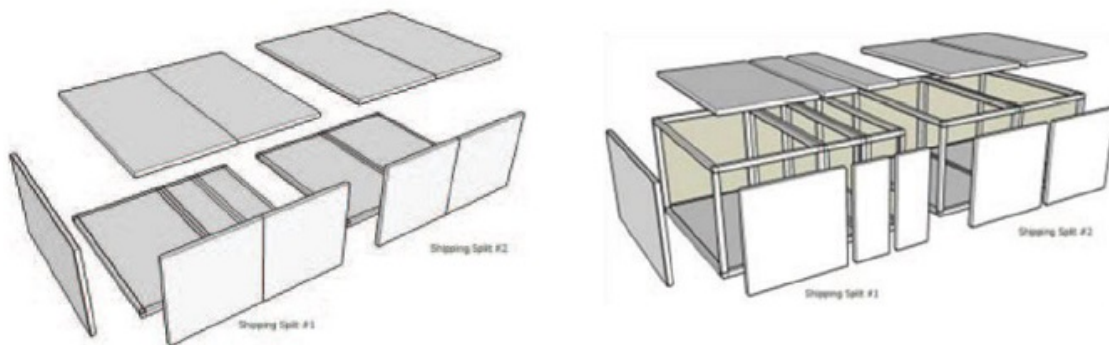
The CLCF Climate Changer range of air-handling units from Trane comes in two versions. One is designed for comfort applications (pictured) in office buildings, schools, hotels and other commercial buildings. The other range is for hospital, laboratory and pharmaceutical use. The AHUs are Eurovent-certified and available with airflows from 1,000 to 60,000 m³/h.



Trane CLCF Climate Changer™

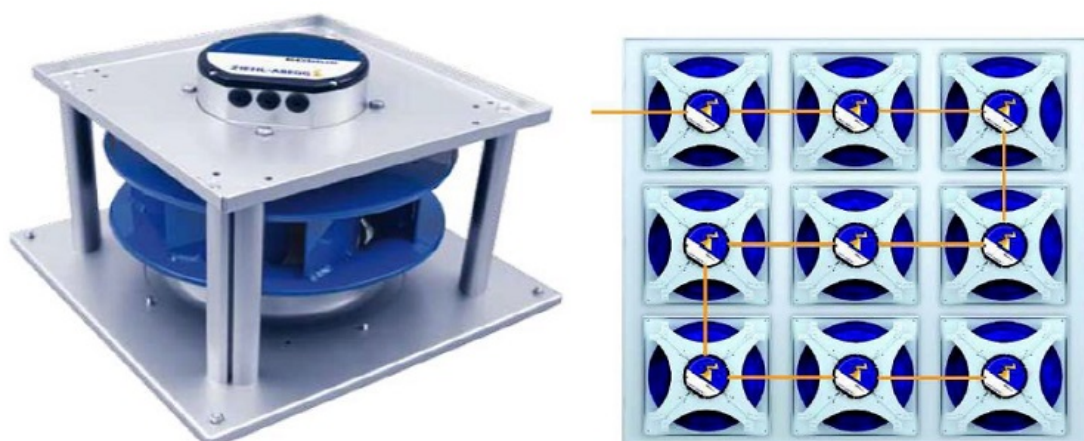
The CLCF Climate Changer range has the following product features and advantages:

1. **Frameless casing** (available in galvanized steel, painted galvanized steel, aluminium, or stainless steel 304 or 316) has no block-off, and dimensions are based on universal filter dimensions, which reduce pressure drops by up to 50 percent.



*Self-supporting (**frameless**) design (left)
Traditional modular post-and-panel (**pentapost**) design (right)*

2. **Integrated EC plug fan** provides higher energy efficiency, smaller size and better acoustic performance. Intelligent central air conditioning, called ZAWall, can also be provided as an optional item.



EC Plug Fan and ZAWall system

3. **4-point inclined floor and centralized vertical drain** serves as an integrated drain

pan that avoids dust and bacterial traps.



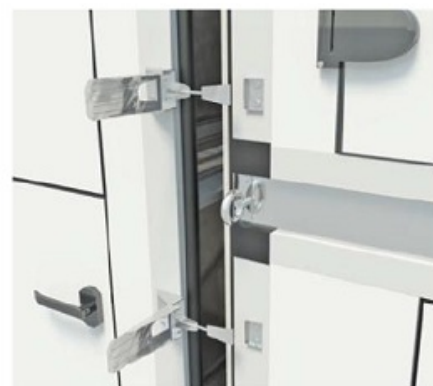
4-point inclined floor

4. **High-density Rockwool insulation**, 80 kg/m³ with 2.0 mm double-skinned panel thickness provides high-quality sound attenuation, estimated to exceed 40dB for acoustically sensitive applications.

Acoustical insulation in dB	Octave band						
	125 Hz	250 Hz	500 Hz	1000 Hz	2000 Hz	4000 Hz	8000 Hz
CLCF50mm RW	13	22	30	32	32	34	40
➡ -40dB							



5. **Innovative unit design** helps contractors save on installation costs. Lifting lugs are integrated with the robust base frame and all units ship with a skid designed for forklift transport. A quick, unique and reliable tool-less mechanical connection system is built into the unit when the machine is delivered on-site in multiple pieces.



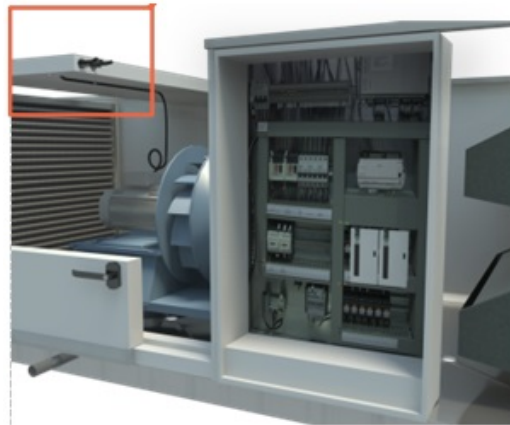
*Built-in removable lifting lugs (left)
Quick and reliable connection system (right)*

6. **Factory-installed energy saving**

system, such as heat recovery wheel, Trane cold dry quiet (CDQ) desiccant wheel. Additional energy recovery options exist, such as heat recovery wheels and desiccant wheels, which can increase the energy efficiency performance of the machine by up to 90 percent.



7. **Quick-connect wiring:** cabling and wiring is done in-factory, minimizing installation costs and providing wiring integrity between sections without having to identify or check continuity (integrated controls only).





Vol 5 / March 2017



繁 | Share | Subscribe | Unsubscribe

Trane Proves Leadership Position 'Beyond Tomorrow' at AHR Expo



With all the changes happening in the world right now – both within and beyond the industry- it's no wonder that Trane chose "Beyond Tomorrow" as its booth theme for the recent International Air-conditioning, Heating and Refrigerating Exposition (AHR Expo) held recently in Las Vegas, Nevada.

Trane has always helped customers navigate industry trends and challenges through innovation and expertise. And with topics such as sustainability, efficiency and connectivity in the forefront of the minds of many of the event's 60,000-plus attendees this year, Trane proved once again it has the industry-leading technology and services that make buildings operate smarter and healthier – today and into the future.

Trane goes big and makes an impact

Trane approached this year's expo as a cross-business, cross-region effort, with teams from our Commercial and Residential HVAC and HVAC Latin America businesses joining forces to make a big impact at the show.



Trane's booth at AHR Expo 2017



Standing room only in Trane's booth for the duration of the show

"We want customers to know that the future of connected buildings is about making it easy for them to succeed with their facilities," said **Jason Bingham**, vice president of digital and energy services. "Trane has a unique ability to deliver solutions that serve the full life of a building – all the way from the systems and controls to the monitoring and management of energy and beyond."

The Trane booth enjoyed a prime location and was a major highlight as 116 Trane team members eagerly helped customers over the three-day event. The booth was the perfect venue to showcase how our systems, controls and services offerings work together as one to provide comfort and solve real business challenges for customers. **Manlio Valdés**, vice president of product management and marketing, said, "Our booth made great use of technology and visuals to convey our brand story. Our location and set-up drew you in, and the team did an outstanding job keeping customers engaged at the show."

The teams also received strong positive feedback from the daily booth presentations on "Connected Buildings: Insights to Drive Business Results", "The State of Refrigerants in

HVAC; The Next Transition Has Begun” and “Systems Design: Discovering New Possibilities”. Furthermore, we gave 75 VIP tours during the event for more than 532 VIP booth-tour participants – almost 15 percent of whom were customers from Trane’s Latin America region.

“We are proud to have seen a large group of customers from Latin America come through our booth at the AHR Expo,” said **Maria Blase**, president of HVAC and transport for Latin America. “We were very appreciative of the time they took to travel to Las Vegas in order to spend time with us. The response was overwhelming, and our team did a great job of making sure everyone felt welcome and saw the industry-leading equipment, technology and services we offer.”

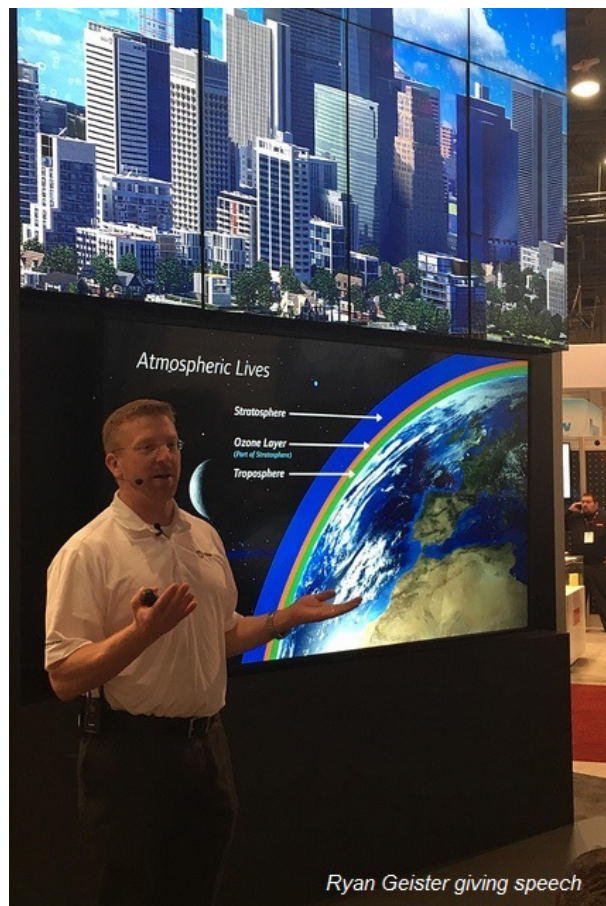


The Trane New Series S™ CenTraVac™ CVHM chiller

Customer event, media and marketing efforts yield buzz

Trane’s AHR Expo staff also held a successful customer event at a local nightclub for more than 1,300 conference attendees. Plus, a flurry of marketing, social media and public relations activity before and during the expo helped yield a ton of buzz at the show and garner 18 media interviews for Trane leaders.

Intelligent systems leader **Ryan Geister** said, “The energy and excitement regarding Trane’s leadership around products and new systems was amazing. This is the culmination of investments we’ve made in our offerings, technology, and our brand, and it was clear that we’re leading in the market.”



Ryan Geister giving speech

Trane Solutions on Display at AHR Expo

Among the commercial solutions on display at the both were:

- *Trane Air-Fi™ wireless technology*
- *New Trane Tracer® Ensemble™ building management systems*
- *Trane Intelligent Services*
- *Trane Series S™ CenTraVac™ chiller portfolio*
- *Trane Precedent™ Light-commercial rooftop unit*
- *Trane Foundation™ Light-commercial rooftop unit*
- *Trane® Performance Climate Changer™ air handlers*
- *Compact Vertical Blower Coil*

Read the show press release for full descriptions of each solution



VIDEO: This tour of Trane's AHR Expo 2017 booth makes you feel like you were there!



PICTURE ALBUMS: Get a sense of the booth floor and more with this Facebook photo album or this Flickr stream



Vol 5 / March 2017



繁 | [Share](#) | [Subscribe](#) | [Unsubscribe](#)

Trane Recognized as America's Most Trusted HVAC System for Third Consecutive Year



Trane has been identified as the Lifestory Research 2017 America's Most Trusted® HVAC System Brand for the third year in a row. The study is based on the opinions of 9,082 consumers and their level of trust in specific HVAC System brands. To qualify to participate in the study, participants must have indicated that they were aware of specific HVAC System brands. As the 2017 Lifestory Research America's Most Trusted® HVAC System Brand, Trane produced the highest Net Trust Quotient Score.

"When a brand like Trane is ranked number one consistently over several years, it is a testament of the trust people have in the brand and products they offer," said Dr Eric Snider, president and chief research officer of Lifestory Research.

Lifestory Research uses customer surveys to track how trust impacts consumers' evaluation of HVAC brands. Trust is measured through the Lifestory Research Net Trust Quotient, in which a score of 100 is average for all brands included in the study. Trane earned the top spot among 17 brands, earning an index score of 119.5, beating out its own top score of 109.9 in last year's study.

Lifestory Research 2017 America's Most Trusted® HVAC System Brands

Rank	HVAC Brands	Index Score
1	Trane	119.5
2	Whisper	116.0
3	Carrier	115.9
4	Lennox	109.2
5	American Standard	109.9

Depend on Trane for high performance, reliability

"We are honoured to hear from independent research that consumers can depend on the Trane brand to deliver high performance and energy efficient solutions for reliable indoor comfort," said Brian Welborn, brand and marketing communications director for Trane. "Our commitment to producing quality systems that homeowners, home builders and residential contractors can depend on never rests on its laurels, so we're even more pleased to be recognized for the third year in a row."

About America's Most Trusted® Award

In its fifth year, the America's Most Trusted® HVAC Brand Study is a designation awarded to brands that garner trust among those they serve. Awards are based on the collection and evaluation of thousands of consumer opinions. Product categories included in the 2017 research program include home builders, active adult resort home builders, faucets, HVAC systems, kitchen appliance brands, laundry appliance brands, paint, and residential real estate brokerages.

Please visit Lifestory Research website to understand more.

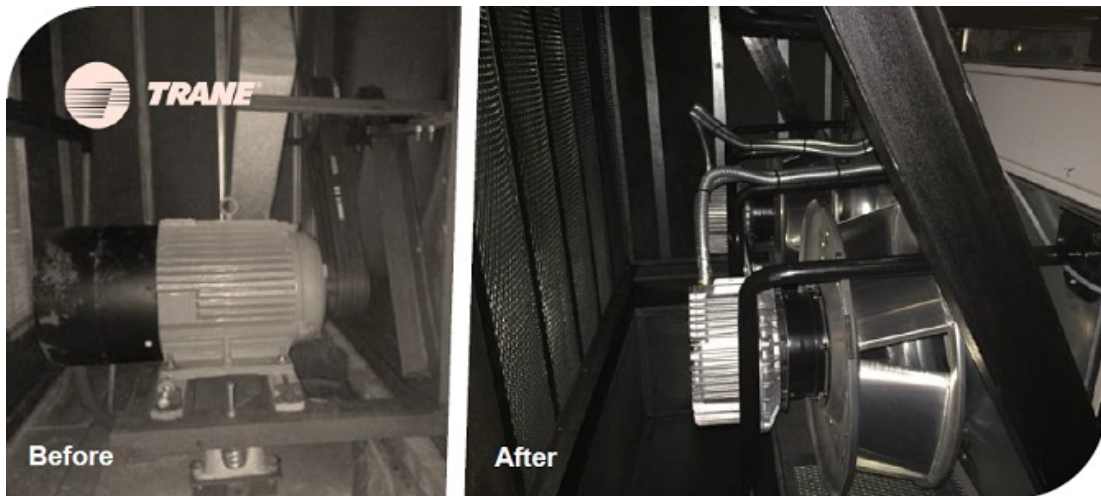


Vol 5 / March 2017



繁 | Share | Subscribe | Unsubscribe

Trane EC Plug Fan Retrofit Option Helps Building Owner Save 40% of Energy



Building Owners and Facility Managers trying to keep operational costs under control are wise to pay special attention to their airside system. The airside systems (AHU + Fan) for commercial building in Hong Kong can consume 28 percent or more of an industrial facility's yearly electricity use.[1] They also become less energy efficient, less reliable and more costly to operate as they age.

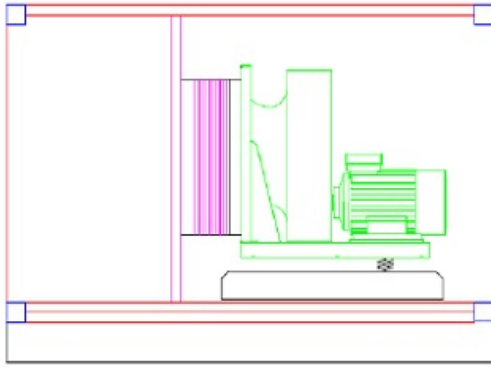
Trane, a leading global provider of indoor comfort systems and solutions and a brand of Ingersoll Rand, offers Air Handlers Retrofit Services to optimize the performance and energy efficiency of AHU Fan systems, particularly those older than 10 years. Trane Air Handlers Retrofit Services can reduce yearly operating costs up to 40 percent and more in some cases.

Dorset House Taikoo Place AHU Retrofit

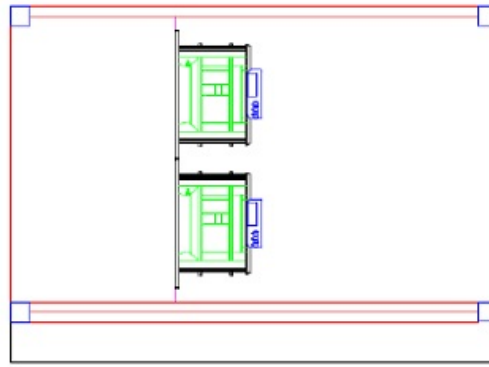
The original fan and air-handling unit (AHU) arrangement for the 32/F of Dorset House Taikoo Place, owned and managed by Swire Properties, is typical of the systems used throughout of the building, with air distributed via a belt-driven, backward-curved centrifugal fan arrangement.

In November 2015, the existing fan for one of the variable-air-volume (VAV) air handlers, which delivers 10500l/s of air flow with normal plug fan and VSD starter, was converted to four numbers of a backward-curved EC plug fan, which can deliver 11200l/s air-flow rate. The design static was slightly increased from 1125Pa to 1200Pa and the rated motor power decreased from 22kW to 4x5.05kW

Old System



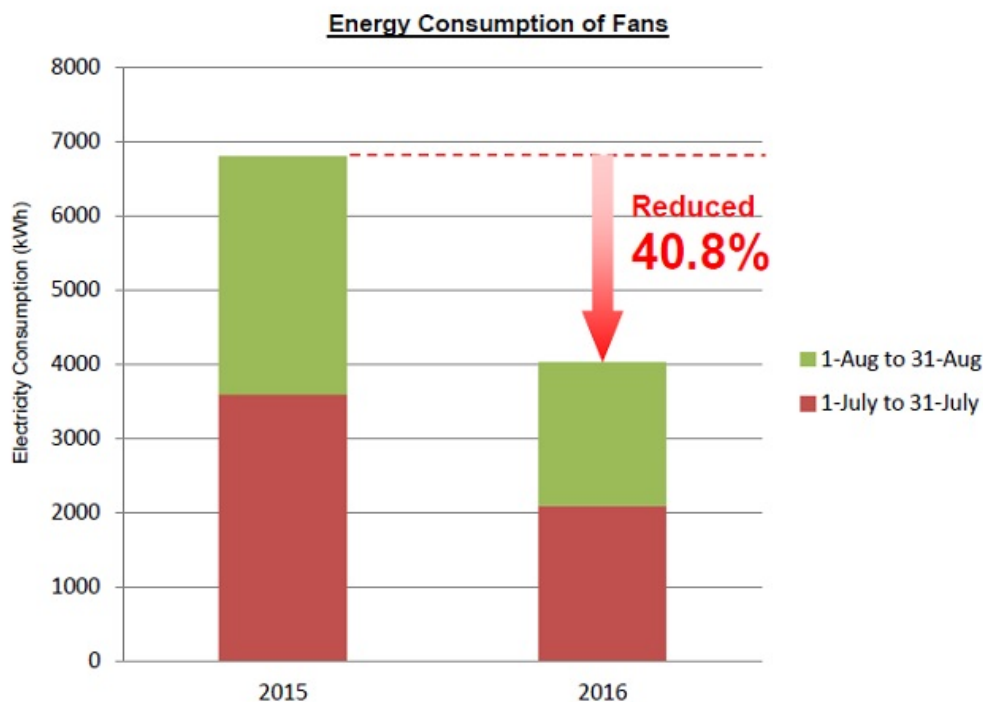
New System



	Belt Driven Fan		EC Motor Plug Fans
Speed Control	External VSD (Operating range at 25Hz to 45Hz)	Speed Control	Build in EBM VSD (maximum operating at 85%)
Rated Input Power (kW)	22kW	Rated Input Power (kW)	20.2kW (4x5.05 kW)
Design Air Flow Rate (l/s)	10500l/s	Design Air Flow Rate (l/s)	11200l/s
Design Static Pressure (Pa)	1125Pa	Design Static Pressure (Pa)	1200Pa

Project Results

The retrofit work commenced in early November 2015, and Testing & Commissioning was completed in March 2016. As part of the upgrade works, airflow was increased by six percent, returning the supply air quantity to the design figure, and combined with the resultant increased static pressure by 75Pa. The portable power analyzer was employed to measure the onsite performance before and after the retrofit works. Measurement was taken pre-retrofit between 1 July to 31 August 2015, and post-retrofit from 1 July to 31 August 2016. The energy consumption of the retrofit works are summarized below:



Conclusion

Trane fulfils the entire retrofit process, from design to supply, installation, testing and commissioning. Trane Air Handlers EC Fan Retrofit Services also include ongoing maintenance and repair to ensure continued optimal operation.

[1] *A Detailed Energy Audit for a Commercial Office Building in Hong Kong – Hong Kong Institution of Engineers Transactions Volume 5 Number 3, 1995.*

THK | TSHK | HKAPC



Vol. 5 / March 2017



繁 | Share | Subscribe | Unsubscribe

Trane Hong Kong Company News

TYS Annual Dinner 2017



Management & staff of TYS make a toast during the dinner.

The TYS Annual Dinner Party was held on 18 January at Maxim's Palace Chinese Restaurant, Central. The climax of the highly enjoyable evening was the Lucky Draw – there was plenty of excitement in the air! The event celebrated another successful year, not just in terms of business but also in the continuing advancement of Hong Kong's HVAC industry.

HKFEMC Spring Dinner 2017



Mr. Frankie Chan, Managing Director-Systems & Services of Hong Kong toasting in HKFEMC Spring Dinner (left 1st)

On 17 February, The Hong Kong Federation of Electrical and Mechanical Contractors (HKFEMC) hosted its Spring Dinner in Wanchai. Mr Frankie Chan, Managing Director-Systems & Services, and Mr Albert Lo, Assistant General Manager, led the delegation of Trane engineers at the dinner. It was a wonderful opportunity to network and share experiences within the industry in a relaxed environment.

JEC Spring Dinner 2017



The Trane table enjoying the event

The JEC Spring Dinner was held on 3 March at Kowloon International Trade & Exhibition Centre. The theme for this year was "Fantasy Studio", with stunning decorations, games and staff singing performances. Over 40 Trane staff attended the highly enjoyable event.



Vol. 5 / March 2017



繁 | Share | Subscribe | Unsubscribe

Trane Dealer Trip 2017 - Bangkok Thailand



Thai treat: Trane Dealer Trip 2017

In early March, more than 30 Trane dealers, divided into sightseeing and golfing groups, enjoyed a four-day vacation in Bangkok, Thailand. The sightseeing group visited Asiatique – The Riverfront, Koh Kret Island and attended a cooking class at Silom Thai Cooking School, while members of the golfing group honed their skills at the scenic Bangkok Golf Club. All took great pleasure in this exciting trip and were delighted tuck into the local delicacies.



Vol 5 / March 2017



繁 | Share | Subscribe | Unsubscribe

Project Highlights

Supply Product / Energy Solution / Control



Morpheus at City of Dreams, Macau

Trane Solution: Rising energy costs and new regulations have led to a holistic way of looking at energy consumption in buildings. When selecting units and components, more and more consideration is being given to energy efficiency, and life-cycle cost (LCC) has now become a main aspect in any decision-making process. The Next-generation Trane variable-speed "Smart DC" fan coil unit has been employed for the Morpheus hotel at the City of Dreams project in Macau. It is expected to provide energy savings of more than 30 percent over conventional AC motor FCU. Besides saving energy, the Smart DC FCU helps to extend motor life, optimize AC motor speed control, maximize occupant comfort and reduce costs.

Project	Completion Date	Client	Trane Equipment	Trane Features/Benefits
Yuen Chau Kok Telephone Exchange Chiller Replacement	Q4 2017	PCCW	Trane Series R Air-cooled Chiller	Reliable Products
HKJC Shatin Grandstand Chiller Addition	Q4 2017	HKJC	Trane Series R Water-to-water Heat Pump	Reliable Products
Hanford Commercial Centre Chiller Replacement	Q4 2017	Hang Lung Properties	Trane Series R Water-cooled Chiller	Reliable Products
HKUST BRI Building	Q4 2017	HKUST	Trane Sintesis Air-cooled Chiller	Reliable Products
CLP Castle Peak Power Station Chiller Replacement	Q4 2017	CLPC	Trane CGAM Air-cooled Chiller	Reliable Products
CFC Tower, 28 Mody Road, TST Chiller Replacement	Q4 2017	HKJC	Trane Sintesis Air-cooled Chiller	Energy Saving Products
Fortune Centre Chiller Replacement	Q4 2017	Sundart Technical Services Limited	Trane Series R Air-cooled Chiller	Reliable Products
Lee Garden One Chiller Replacement	Q4 2017	Hysan Development Company Limited	Trane Sintesis Air-cooled Chiller	Reliable Products
NKIL6311 Commercial Development	Q4 2017	Hong Kong Pacific Investment	Trane Air-Fi wireless system	Innovative Products
Nathan Road No. 238	Q4 2017	HKPI	Trane Building Service system	Control Project
City of Dream(Hotel D) Macau	Q1 2018	ACEL Eng Company	Trane Smart DC Fan Coil Unit	Energy Saving Products
MTRC Contract 1173	Q1 2018	MTRC	Trane Sintesis Air-cooled Chiller	Reliable Products
Proposed Development at No.45-47 Pottinger Street	Q3 2018	Henderson Land Development	Trane Series R Air-cooled Chiller	Reliable Products
Tsuen Wan TW5 Cityside	Q4 2018	Chinachem Group	Trane Series R Water-cooled Chiller w/ Adaptive Frequency Drive	Energy Saving Products
Tsuen Wan TW5 Cityside	Q4 2018	Chinachem Group	Trane Koolman Air-cooled Chiller	Reliable Products

Service/Maintenance Contract

Project	Completion Date	Client	Trane Service Contract	Trane Features/Benefits
Replacement of Air Cooled Chiller No. 4 and 5 at Island Place Tower	Q2 2017	Island Place (Management) Limited	Trane Sintesis Air Cooled Chiller	Reliable Service
Design and Build of Installation of 1 no. of 300TR Water Cooled Chiller at Landmark North	Q2 2017	Kai Shing Management Services Limited	Trane R134a Screw Chiller	Energy saving product



第五期 / 2017年3月



ENG | 分享 | 訂閱 | 取消訂閱

特靈新世代風櫃系列



CLCF Climate Changer™

- 低安裝成本
- 高能源效益
- 可靠室內空氣質素
- 卓越的系統表現

特靈風櫃系列全面進化推出新世代CLCF™產品

特靈正式向市場推出兩款全新的風櫃產品：一般舒適應用的CLCF Climate Changer™和專為醫院、實驗室和製藥應用而設的CLCF Climate Changer™。

[→ 了解更多](#)

BEYOND TOMORROW

The future never looked so intelligent.

Join us at booth C3106 during the AHR Expo at the Las Vegas Convention Center January 30 – February 1, 2017.



特靈於國際空調博覽會證明其領導地位

冷氣空調無論是行內或行外都隨著世界步伐在急速轉變，就是這原因，特靈選擇了“超越明天”為其最近於美國拉斯維加斯國際空調博覽會（AHR博覽會）的展台主題。

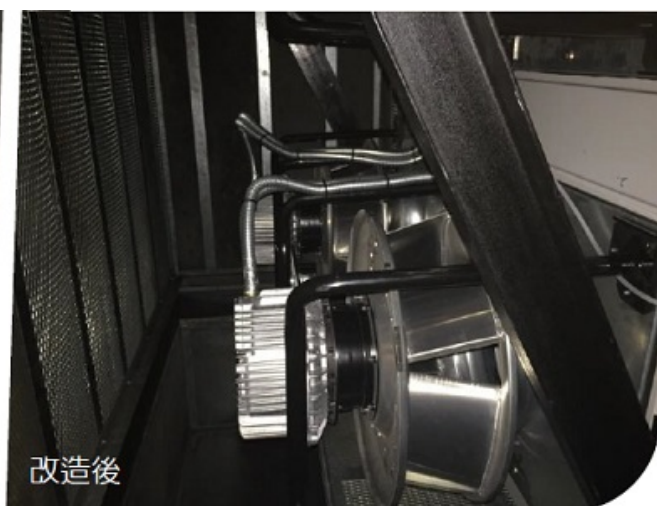
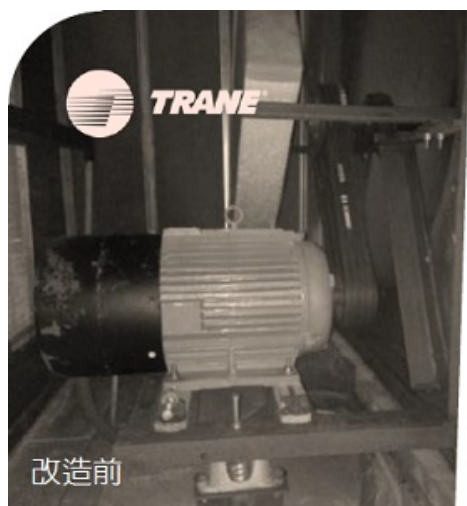
[→ 了解更多](#)



特靈連續三年被認為是美國最可信賴的空調系統品牌

據2017年Lifestory Research報告，特靈空調已經連續第三年被確定為“美國最受信賴的空調系統品牌”。該研究基於9082名消費者的意見及其對指定空調系統品牌的信任程度。

[→ 了解更多](#)



特靈 EC風機翻新方案為客戶節省多達40%的能源

業主們和物業管理人員若想控制建築物的運營成本需特別注意他們的送風系統和設備。香港商業樓宇的送風系統（包括風櫃和風扇）可以佔全幢大廈每年28%的用電量。

[→ 了解更多](#)

最新消息

18.01.2017 | TYS 週年晚宴

17.02.2017 | 香港機電工程商聯會春茗

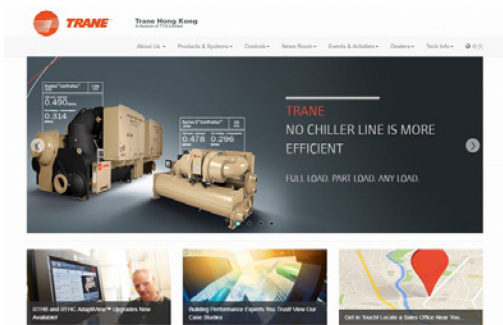
03.03.2017 | 怡和機器春茗晚宴

[▶ 展開全部](#)

特靈新世代 CLCF風櫃系列

請瀏覽我們最新的影片：





特靈香港網頁優化

我們很高興地宣布特靈香港的網頁已完成優化，更新了網頁設計，使介面更方便使用及更新了最新的產品信息。

[→ 了解更多](#)



特靈2017經銷商之旅 - 泰國曼谷

在3月初，三十多位特靈經銷商前往泰國曼谷市觀光遊覽四天，而是次分為觀光及高爾夫球兩團。

[→ 了解更多](#)

新增工程



新濠天地沐梵世酒店

特靈解決方案：不斷上升的能源成本和新的法規使我們能全面地審視建築物的能源消耗。當選擇單元和組件時，在決策過程中我們越來越著重考慮能源效率，及生命週期成本（LCC）。下一代特靈“Smart DC”智慧變頻風機盤管單元已被應用於澳門新濠天地項目的沐梵世酒店中。與傳統的交流電機風機盤管機組相比，預計節能達30%以上。除了節省能源，Smart DC亦有助延長馬達壽命，優化交流電機速度控制，提高用戶舒適感和減低成本。

[→ 了解更多](#)



第五期 / 2017年3月



ENG | 分享 | 訂閱 | 取消訂閱

特靈風櫃系列全面進化推出新世代CLCF™產品

特靈新世代風櫃系列



CLCF Climate Changer™

- 低安裝成本
- 高能源效益
- 可靠室內空氣質素
- 卓越的系統表現

“CLCF™空氣處理器提供更低的安裝成本，能源效率，可靠的室內空氣質量和整體卓越的系統性能。”

特靈正式向市場推出兩款全新的風櫃產品：一般舒適應用的CLCF Climate Changer™和專為醫院、實驗室和製藥應用而設的CLCF Climate Changer™。由特靈設計，以全面滿足建築物的需求，產品由意大利製造，為業界提供低安裝成本，高能源效率，可靠的室內空氣質量和全面卓越的系統性能。

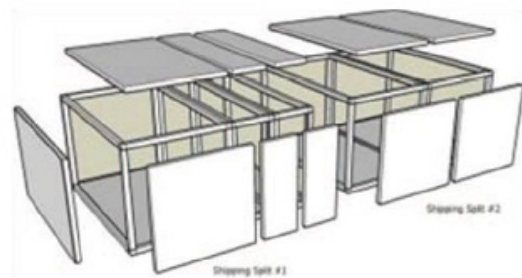
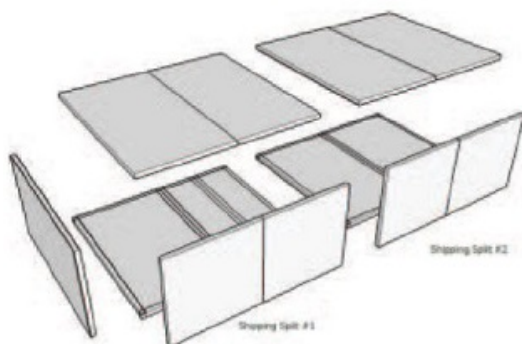
特靈CLCF Climate Changer™風櫃有兩個版本。一是設計用於辦公樓、學校、酒店和其他商業用途的舒適應用（如圖所示）。另一個範圍是用於醫院、實驗室和製藥應用。該產品獲得歐洲產品認證，提供的風量由1,000到60,000m³/h。



特靈 CLCF Climate Changer™

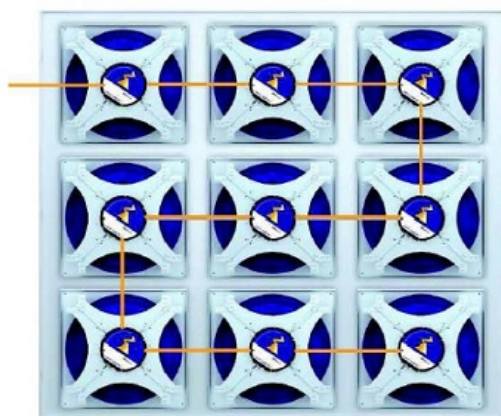
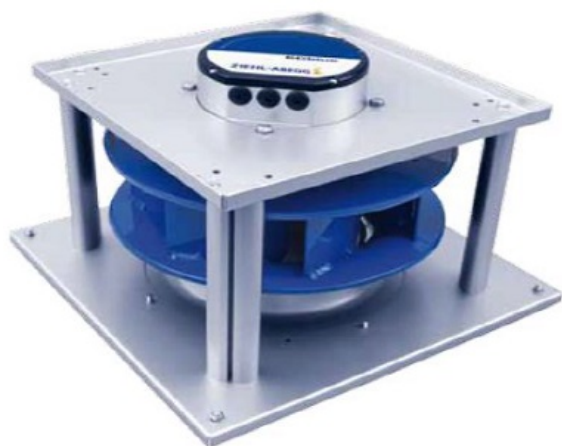
CLCF Climate Changer™ 產品系列具有以下產品特點和優點：

1. 無框外殼（能提供鍍鋅鋼、塗料鍍鋅鋼、鋁、不銹鋼304或316選項），以通過所有濾器尺寸為標準，可減低壓空氣壓差至50%。



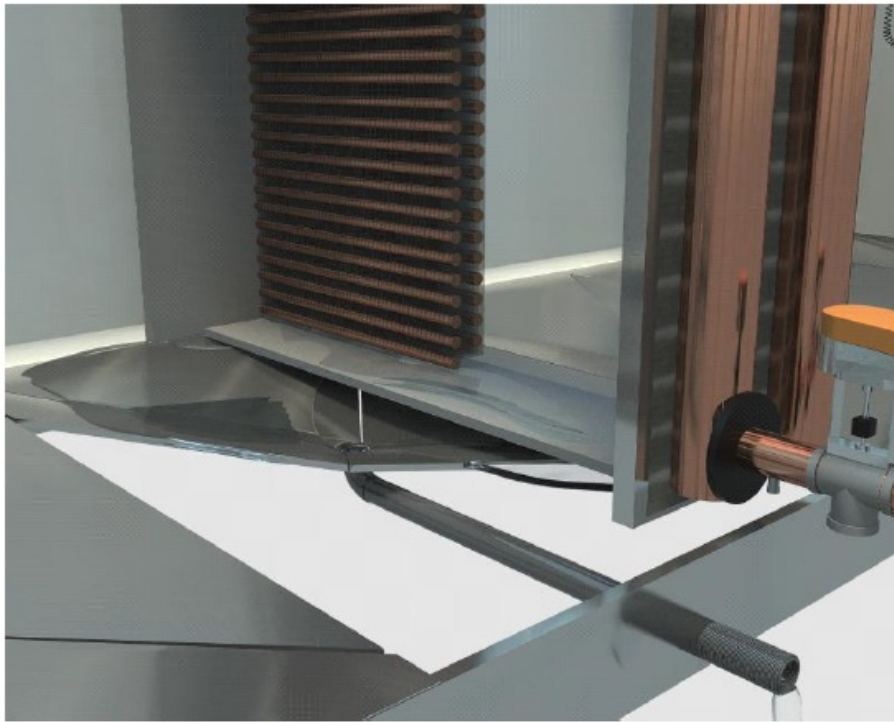
（左）自支撐（無框）設計
（右）傳統組模化（板框式）設計

2. 整合式**EC**風機 提供高能源效率，小尺寸和低噪音。更可提供智能式多組風機中央控制系統(又名ZAwal)選項。



EC 風機和ZAwal 系統

3. **4**點式傾斜台面 和中央去水提供一體化排水盤，可避免灰塵積聚和細菌滋生。



四點式傾斜台面

4. 高密度岩棉 隔溫棉，80kg/m³ 2.0 mm厚雙面結構能提供高效能的噪音阻隔，可減低40dB的噪音，適用於聲學敏感的應用。

Acoustical insulation in dB	Octave band						
	125 Hz	250 Hz	500 Hz	1000 Hz	2000 Hz	4000 Hz	8000 Hz
CLCF50mm RW	13	22	30	32	32	34	40
➡ -40dB							



5. 創新的設計幫助承建商節省安裝成本。例如框架底坐附設起重吊環、所有產品都備有可用於叉車運輸的滑軌。當產品需要拆件運送時都內置快速、獨特和可靠的無工具機械連接系統。

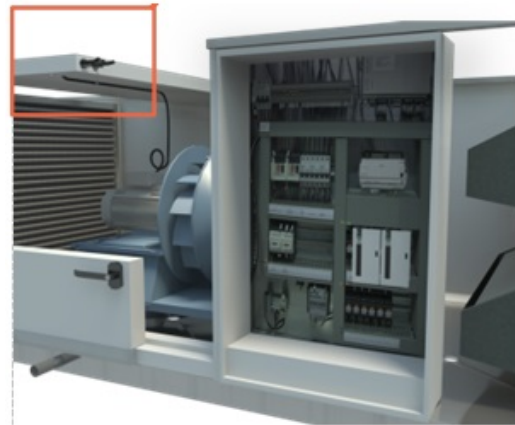


(左) 內置可拆卸吊耳
(右) 快速可靠的連接系統

6. 工廠安裝的節能系統，例如熱回收輪，特靈冷乾安靜（CDQ）乾燥輪。還有其他能量回收選項，如熱回收輪和除濕輪，可將機器的能效性能提高高達90%。



7. 快速連接：在工廠進行穿線和連接，將安裝成本降至最低，並在各部分之間提供接線完整性，而無需識別或檢查連續性（僅限集成控制器）。



THK | TSHK | HKAPC

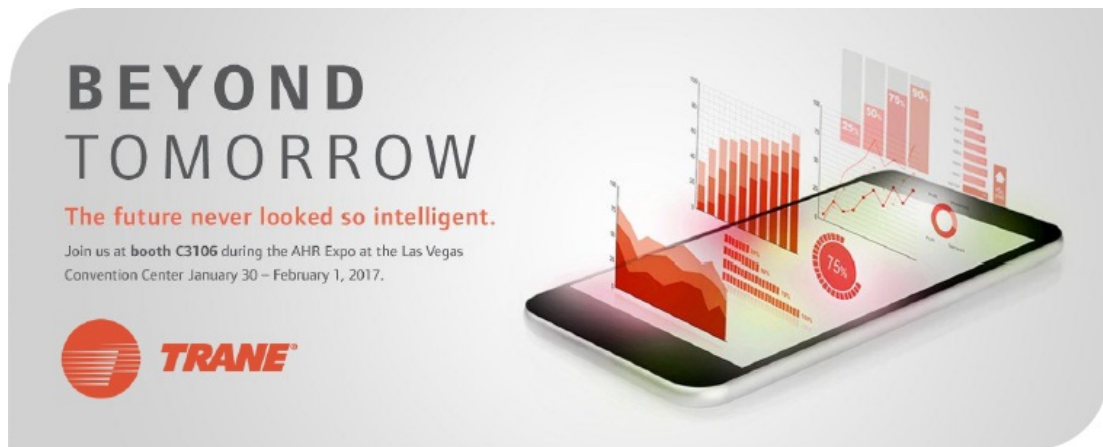


第五期 / 2017年3月



ENG | 分享 | 訂閱 | 取消訂閱

特靈於國際空調博覽會證明其領導地位



冷氣空調無論是行內或行外都隨著世界步伐在急速轉變，就是這原因，特靈選擇了“超越明天”為其最近於美國拉斯維加斯國際空調博覽會（AHR博覽會）的展台主題。

特靈一直通過創新和專業知識幫助客戶了解行業趨勢和挑戰。在今年超過六萬名與會者中不乏持續發展，可再生能源，高效能和連接性等主題，然而，特靈再次證明無論是今天或未來，它都擁有行業領先的技術和服務，能使建築物更加智能和更健康。

特靈全力以赴

今年的博覽會，特靈聯合跨業務和地區的力量為展會出力，團隊包括商業和住宅空調團隊和拉丁美洲企業人員一起籌備。



特靈於博覽會的展出攤位



展出期間人山人海的清況

數碼及能源服務副總裁**Jason Bingham**表示：『我們希望客戶知道，連接建築的未來在於使他們能夠輕鬆地利用其設施取得成功。』『特靈擁有獨特的能力，能夠提供滿足建築整個生命週期的解決方案，從系統和控制到能源監控和管理。』

位於會場中心位置，特靈攤位由一百一十六位團隊成員組成客戶服務團隊。方便開揚的展區有效地為我們的客戶展示我們的系統和產品服務。

產品管理和營銷的副總裁**Manlio Valdés**表示：『我們的展位容合先進的技術和視覺效果來傳達我們品牌的故事。我們的位置和設置吸引客戶，加上優秀的團隊令客戶能盡情投入其中。』

於三場主要的座談會中，我們的團隊獲得多個正面評價。此外，於活動期間我們為超過**532**名貴賓提供了**75**次VIP導覽，其中**15%**來自特靈拉丁美洲地區的客戶。

拉丁美洲空調和交通運輸部總裁**Maria Blase**表示：『我們非常榮幸有大批拉丁美洲客戶參於是次博覽會。』『我們特別感謝他們於拉斯維加斯旅行途中抽出寶貴時間與我們共聚。我

們的團隊熱烈歡迎每位參加者，同時為他們詳盡提供我們業界領先的設備、技術和服務等資料。』

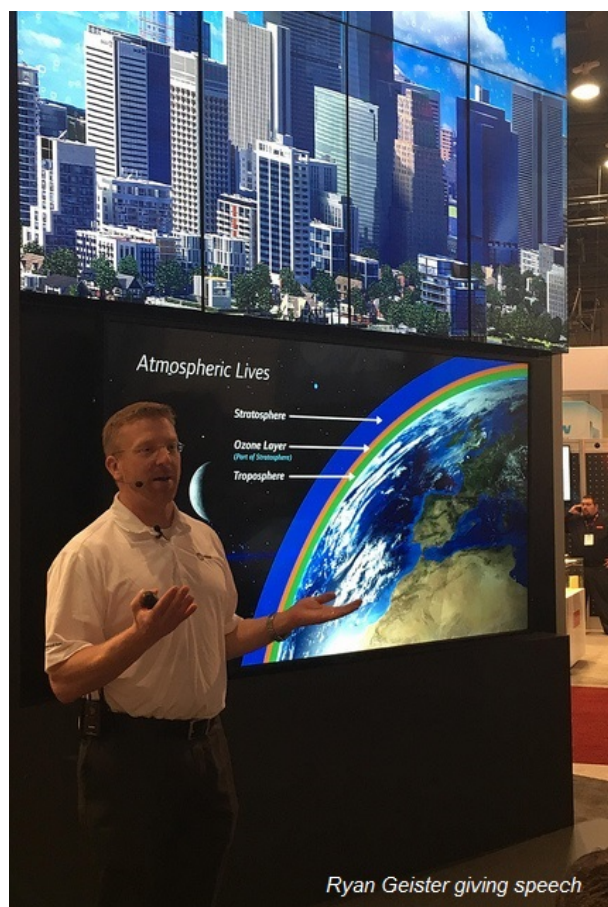


特靈最新的Series S™ CenTraVac™ CVHM水冷機組

客戶、媒體和營銷活動產生共鳴

特靈國際空調博覽會的工作人員於當地特別舉辦了一場夜間展覽並有超過1300名與會者參加。此外，在博覽會之前和期間，一系列營銷、社交媒體和公關活動均獲得巨大迴響，為特靈高層們帶來了18次媒體採訪。

特靈智能系統總幹事Ryan Geister說：『關於特靈的新產品和系統均獲得驚人的重視和關注。這證明了我們於產品，技術和品牌方面投資均於市場上處於領先地位。』



展覽期間特靈提供的解決方案

包括：

· 特靈 Air-Fi™ 無線技術

- 特靈Tracer® Ensemble™ 屋宇控制系統
- 特靈智能服務
- 特靈Series S™ CenTraVac™ 水冷機組
- 特靈Precedent™ 屋頂式風冷機組
- 特靈Foundation™ 屋頂式風冷機組
- 特靈Performance Climate Changer™ 風櫃
- 直立式水盤管

按這裡了解全部的展覽項目



視頻: 這視頻帶你遊覽一次特靈國際空調博覽會2017，讓你感覺置身其中！



相冊: 想參觀更多我們展覽的記錄，可瀏覽**Facebook photo album** 或者 **Flickr stream**

THK | TSHK | HKAPC



第五期 / 2017年3月



ENG | 分享 | 訂閱 | 取消訂閱

特靈連續三年被認為是美國最可信賴的空調系統品牌



據2017年Lifestory Research報告，特靈空調已經連續第三年被確定為“美國最受信賴的空調系統品牌”。該研究基於9082名消費者的意見及其對指定空調系統品牌的信任程度。為獲得研究資格，參與者必須對指定的空調系統品牌有透徹了解。作為2017年美國最受信任的空調系統品牌，特靈獲得最高的商譽淨值分數。

Lifestory Research總裁兼首席研究官Eric Snider表示“像特靈這樣的品牌能夠連續多年獲得第一排名，足以證明消費者對他們提供的品牌和產品的信任”。

Lifestory Research使用客戶調查來追蹤消費者對HVAC品牌的評價。信任度通過計算Lifestory Research商譽淨值分數來表示，研究中的所有品牌的平均分為100。特靈在17個品牌中名列前茅，獲得119.5的分數，擊敗了去年研究中自己的109.9的最高分。

Lifestory Research 2017 America's Most Trusted® HVAC System Brands

Rank	HVAC Brands	Index Score
1	Trane	119.5
2	Whisper	116.0
3	Curtis	115.9
4	Carrier	109.2
5	American Standard	109.9

取決於特靈的高性能可靠性

特靈品牌和營銷傳播總監Brian Welborn說：『我們非常榮幸獨立研究表明消費者可以依靠特靈品牌提供高性能和高能效的解決方案，確保可靠的室內舒適度。』『我們承諾生產高質量的產品，為家用、發展商和承包商提供持續可靠的系統，所以我們很高興能獲得連續三年的認定。』

關於美國最可靠獎

在第五年，美國最值得信賴的空調品牌研究是給予那些在他們服務的品牌之間贏得信任的品牌。獎項是基於收集和評估成千上萬的消費者意見。2017年研究計劃中包括的產品類別包括家庭建築商，度假村建築商，中央空調系統，廚具電器品牌，洗衣設備品牌，油漆和住宅房地產經紀人。

*想了解更多，按這裡訪問***Lifestory Research***網站。*

THK | TSHK | HKAPC

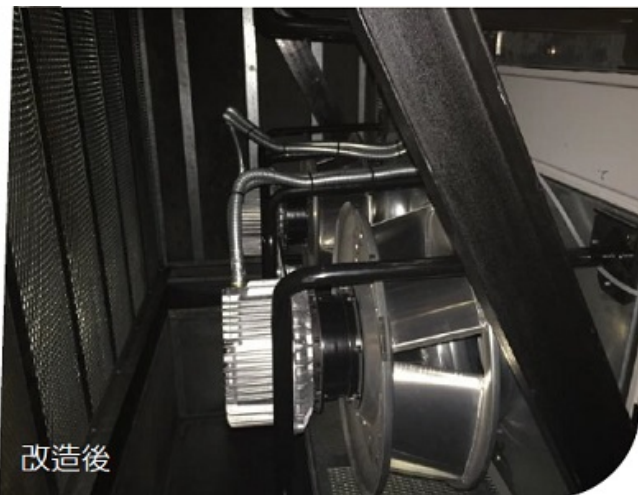
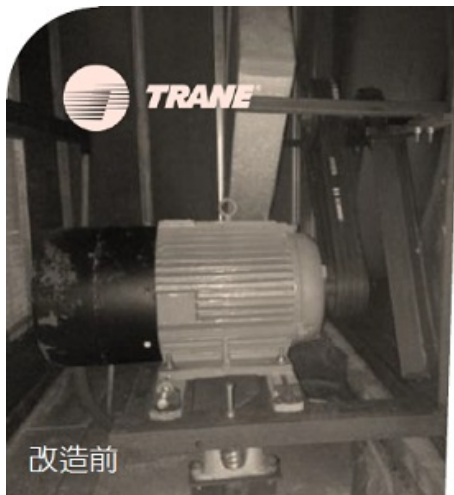


第五期 / 2017年3月



ENG | 分享 | 訂閱 | 取消訂閱

特靈 EC風機翻新方案為客戶節省多達40%的能源



業主們和物業管理人員若想控制建築物的運營成本需特別注意他們的送風系統和設備。香港商業樓宇的送風系統（包括風櫃和風扇）可以佔全幢大廈每年28%的用電量。[1] 隨著年齡老化，送風系統會變得不可靠和浪費能源，並增加操作成本。

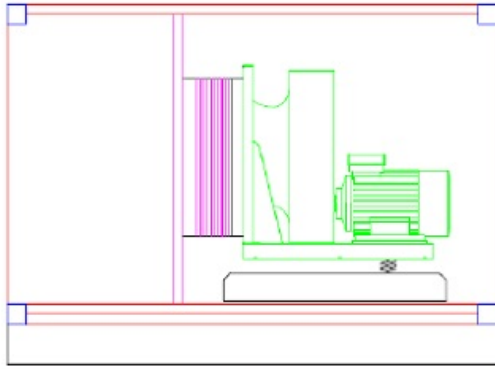
貴為全球領先的室內舒適系統和解決方案供應商和英格索蘭品牌之一，特靈推出EC風機翻新方案服務，以優化風櫃風機系統的性能和能效，特別是10年以上的風機組合。特靈風機翻新方案可以在一些情況下將全年用電成本降低多達40%或更多。

太古坊多盛大廈風櫃翻新方案

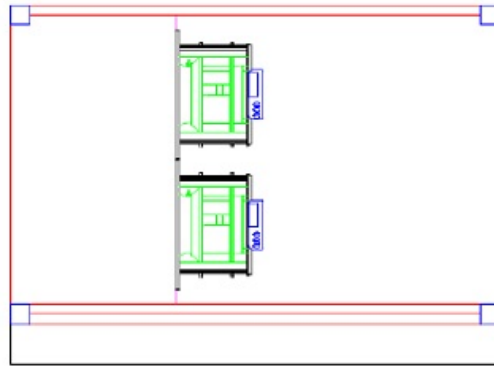
由太古地產擁有及管理的多盛大廈，其32樓原裝風機及風櫃為典型的皮帶驅動的向後彎曲的離心式風扇裝置。

於2015年11月，該機組由一個使用傳統後置式皮帶帶動風機，出風量達10500l/s可變風量（VAV）風櫃改為使用四個向後式EC風機連內置可變速（VSD）起動器，出風量達11200l/s風樓。設計出風靜壓由1125Pa略微增加到1200Pa，定額電機功率從22kW降低到4x5.05kW。

舊系統



新系統



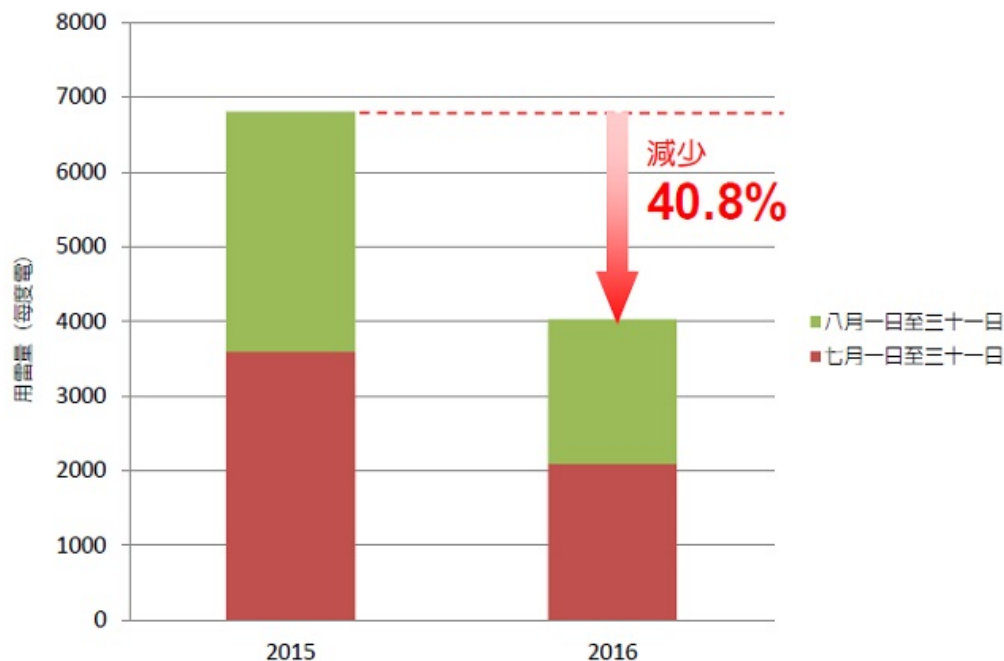
	皮帶式風機
速度控制	外置變速系統 (範圍由 25Hz 至 45Hz)
用電 (千瓦)	22 千瓦
設計風量 (升/秒)	10500 升/秒
設計出風靜壓 (Pa)	1125Pa

	EC 風機
速度控制	內置變速系統 (最大速度 85%)
用電 (千瓦)	20.2 千瓦 (4x5.05 千瓦)
設計風量 (升/秒)	11200 升/秒
設計出風靜壓 (Pa)	1200Pa

項目結果

改造工程於2015年11月初開始，測試與調試於2016年3月完成。作為升級工程的一部分，氣流增加了6%，出風靜壓增加75Pa。項目使用便攜式功率分析儀測量改造前和改造後的用電量。測量期為改造之的2015年7月1日至8月31日之間和改造後的2016年7月1日至8月31日進行。改造工程的能源消耗總結如下：

風機的能源消耗



結論

特靈實現了從設計到供應，安裝，測試和調試的整個改造過程。特靈EC風機翻新方案還能包括持續的保養和維修，以確保系統持續運作在最佳狀態。



第五期 / 2017年3月



ENG | 分享 | 訂閱 | 取消訂閱

最新消息

TYS 週年晚宴 2017



管理職及員工為週年晚宴祝酒

TYS週年晚宴於1月18日在中環美心皇宮舉行。晚宴的重頭戲是幸運大抽獎，員工們工作人員都製愉快的享受晚宴。我們很高興公司又一年的佳績，不僅是在於商業價值，而且是與香港暖通空調行業的不斷進步。

香港機電工程商聯會春茗晚宴 2017



特靈香港董事總經理(系統及工程)陳偉平先生於香港機電工程商聯會春茗晚宴祝酒

二月十七日，香港機電工程商聯會於灣仔舉行春茗晚宴。特靈香港董事總經理

(系統及工程)陳偉平先生與副總經理勞燦傑先生帶領特靈工程師一起參加晚宴，與香港機電工程商聯會一起分享歡樂時光。這是特靈代表與同業進行交流的難忘時刻。

怡和機器春茗晚宴 2017



TYS代表於怡和機器春茗晚宴團體照

怡和機器春茗晚宴於3月3日在九龍灣國際貿易展覽中心舉行。今年的主題是“幻想工作室”，當晚場地佈置華麗，遊戲豐富，精彩歌唱表演。超過40名特靈員工被邀請參加是次活動，與怡和機器快樂歡聚。



第五期 / 2017年3月



ENG | 分享 | 訂閱 | 取消訂閱

特靈經銷商之旅2017 - 泰國曼谷



特靈經銷商之旅2017團體照

在3月初，三十多位特靈經銷商前往泰國曼谷市觀光遊覽四天，而是次分為觀光及高爾夫球兩團。觀光團團友參觀了多個景點，包括到Asiatique河畔觀光夜市、咕雞島及在席隆烹飪學校體驗製作傳統泰式料理。高爾夫球團團友則在景色秀麗的曼谷市高爾夫球場大展身手，切磋球技。各經銷商在此行度過了一個精彩的假期，並品嚐多款當地美食。



第五期 / 2017年3月



ENG | 分享 | 訂閱 | 取消訂閱

新增工程

產品供應 / 能源方案 / 屋宇自控



新濠天地沐梵世酒店

特靈解決方案：不斷上升的能源成本和新的法規使我們能全面地審視建築物的能源消耗。當選擇單元和組件時，在決策過程中我們越來越著重考慮能源效率，及生命週期成本

（LCC）。新一代特靈“Smart DC”智慧變頻風機盤管單元已被應用於澳門新濠天地項目的沐梵世酒店中。與傳統的交流電機風機盤管機組相比，預計節能達30%以上。除了節省能源，Smart DC亦有助延長馬達壽命，優化交流電機速度控制，提高用戶舒適感和減低成本。

項目	完成日期	客戶	特靈產品	特靈方案
圓洲角機房冷水機更換	2017 第四季	電迅盈科	特靈 R 系列 風冷式冷水機	可靠產品
沙田馬場看台加機	2017 第四季	香港賽馬會	特靈 R 系列 水源熱泵	可靠產品
恒福商業中心冷水機更換	2017 第四季	恒隆集團	特靈 R 系列 水冷式冷水機	可靠產品
香港科技大學 BRI 大廈	2017 第四季	香港科技大學	特靈 Sintesis 風冷式冷水機	可靠產品
中電青山道變電站冷水機更換	2017 第四季	中電	特靈 OGAM 風冷式冷水機	可靠產品
中福商業大廈冷水機更換	2017 第四季	香港賽馬會	特靈 Sintesis 風冷式冷水機	節能產品
恩平中心冷水機更換	2017 第四季	承達工程	特靈 R 系列 風冷式冷水機	可靠產品
利園大廈冷水機更換	2017 第四季	希慎	特靈 Sintesis 風冷式冷水機	可靠產品
NKIL6311 商業發展	2017 第四季	港豐發展	特靈 Air-fi 無線技術	創新產品
彌敦道 238 號	2017 第四季	港豐發展	特靈 屋宇自控系統	屋宇自控
新濠天地沐梵世酒店	2018 第一季	鴻業集團	特靈 智能直流 冷風機	創新產品
港鐵 1173 合約	2018 第一季	港鐵	特靈 Sintesis 風冷式冷水機	可靠產品
砵典乍街 45 至 47 號	2018 第三季	恒基集團	特靈 R 系列 風冷式冷水機	可靠產品
荃灣 5 區城畔	2018 第四季	華懋集團	特靈 R 系列 水冷式冷水機 連變頻超動器	節能產品
荃灣 5 區城畔	2018 第四季	華懋集團	特靈 Koolman 風冷式冷水機	可靠產品

服務 / 保養合約

項目	完成日期	客戶	特靈服務合約	特靈方案
港運大廈冷水機房更換 4 和 5 號機	2017 第二季	第一太平戴維斯物業管理有限公司	特靈 Sintesis 風冷式冷水機	可靠服務
設計並安裝上水廣場 300 冷順冷水機	2017 第二季	啓勝管理有限公司	特靈 R 系列 水冷式冷水機	節能產品